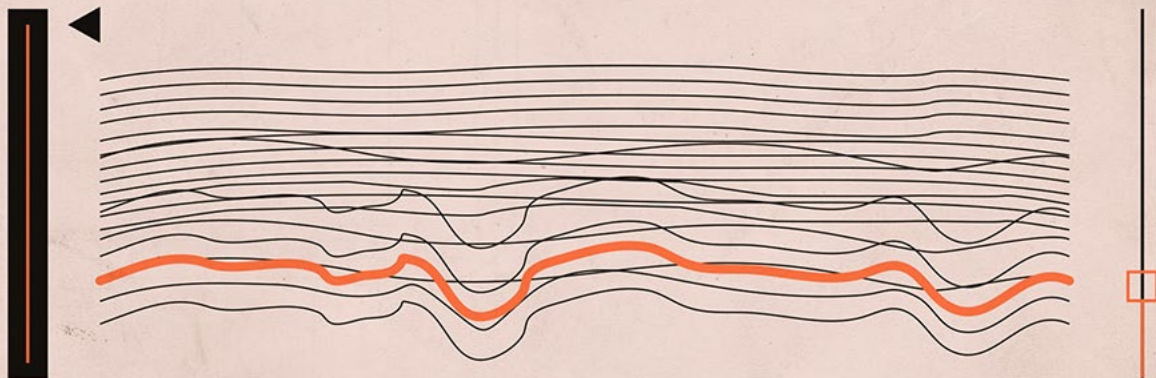


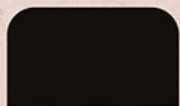
ABLETON WAVETABLE



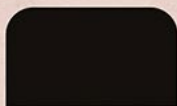
DEEP HOUSE PATCHES



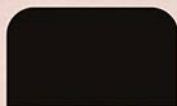
0.0 dB FX 1 0.0% FX 2 0.0% Semi 0 st Det 0 ct 13%



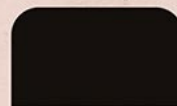
50



45



2.61 ms



75

installation

wavetables

To install the **Wavetables**, copy the 'Ableton Wavetable - Deep House Patches - Wavetable Presets' folder to the 'Wavetable' folder of your Ableton user library.

The exact location of your library will depend on where you chose to install it, but common locations are:

Windows 10: \Users\[username]\Documents\Ableton\User Library\Presets\Instruments\Wavetable

Mac OS: /Users/[username]/Music/Ableton/User Library/Presets/Instruments/Wavetable

For information on how to find your User Library, visit the following link:

<https://help.ableton.com/hc/en-us/articles/209774085-The-User-Library>

Please note: You must own Wavetable by Ableton to use the included patches. The included Instrument Racks **require** Ableton Live 10.0.5 Suite Edition or higher to run.

instrument racks

To install the **Instrument Racks**, copy the 'Ableton Wavetable - Deep House Patches - Instrument Racks' folder to the 'Instrument Rack' folder of your Ableton user library.

Windows 10: \Users\[username]\Documents\Ableton\User Library\Presets\Instruments\Instrument Rack

Mac OS: /Users/[username]/Music/Ableton/User Library/Presets/Instruments/Instrument Rack

introduction

/2

Welcome to **Ableton Wavetable: Deep House Patches**, a mix of classic sounds and forward-thinking synthetics. We wanted this soundsset to journey through the decades of deep house and represent the evolution of the genre through its sounds.

In the classic realm, this soundsset is inspired by the likes of Larry Heard, Moodymann and Kerri Chandler. As far as the more forward-thinking realm, we've wandered into the modern electro inspired deep house (Hot Since 82, Disclosure, Maceo Plex) one will find heavy plucks, lush pads and deep bass lines.

Ableton Wavetable: Deep House Patches offers 95 fully macro-controllable Wavetable Instrument Racks for Ableton Live 10 crafted for the deeper shades of house.

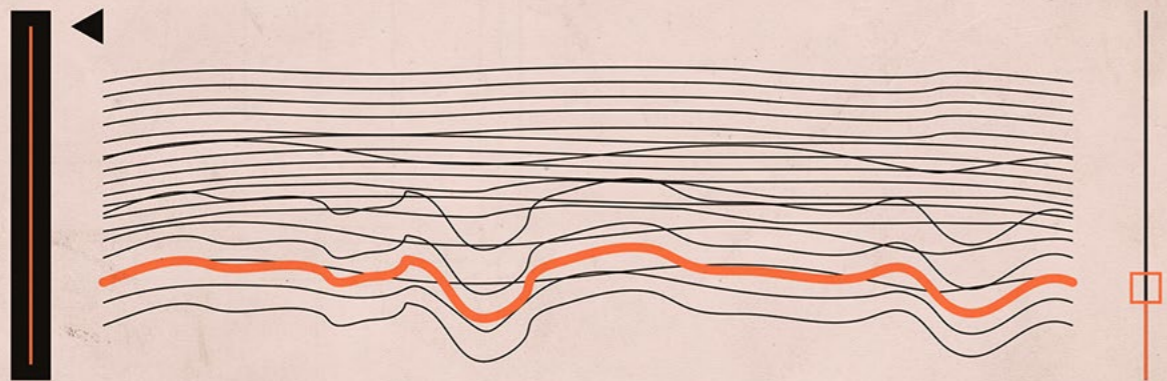
Designed from the ground up to cover all melodic bases in your deep house productions, we've covered the essentials - basses, chords, keys, pads, synths. **Ableton Wavetable: Deep House Patches** spans from driving, peak-time

patches to deeper offerings for the after-hours and beyond.

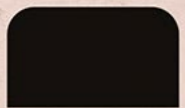
Built exclusively from Ableton's native tools and FX, each macro-controllable patch offers deep-level and highly-targeted enhancement of the key synth design components to mangle and mold the patch further for your own productions.

But customisation is also key, and all patch fx and macros are fully-editable and Push compatible. Open them up, tweak parameters, change routings, swap in and out tools - so they fit your workflow and production seamlessly.

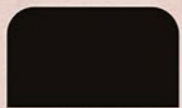
Sample Magic Team



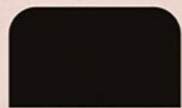
0.0 dB FX 1 0.0% FX 2 0.0% Semi 0 st Det 0 ct 13%



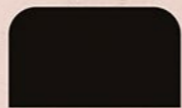
50



45



2.61 ms



75

Rack Info

Bass

Deep, moody, subby 'n' dubby basslines all primed for maximum production ease. Each patch is meticulously designed with 8 custom macros ranging from Filters, Saturation, Echo, Envelope Decay and Release, FM modulation, Bass Boost, Sub Gain, and more.

Chords

Get into the groove with 17 Chord patches that are sure to get your inspiration juices flowing. All primed for Deep House and related productions. Whether you're seeking more saturation, or wanting to echo-out your audiences, our Chord patches will do the job with 8 custom assigned macros - all dancefloor approved.

Keys

Jagged keys, hooky melodics and arpeggio-ready sounds. Need less attack? Want more tone? How about a touch of decay? 8 custom macros assigned to each patch for production-ease.

Pads

Bring the most out of your mid-range with these sulky and glossy pads. With multiple enveloping options from Filter Envelope Amount, Filter Attack, and Filter Decay - all you need is right at your fingertips.

Synths

Deep house ready synth patches with more flexibility than the ear can handle. With double-filtering control, delay, echo, and envelope modulation the possibilities are endless for total tone control and precisino.